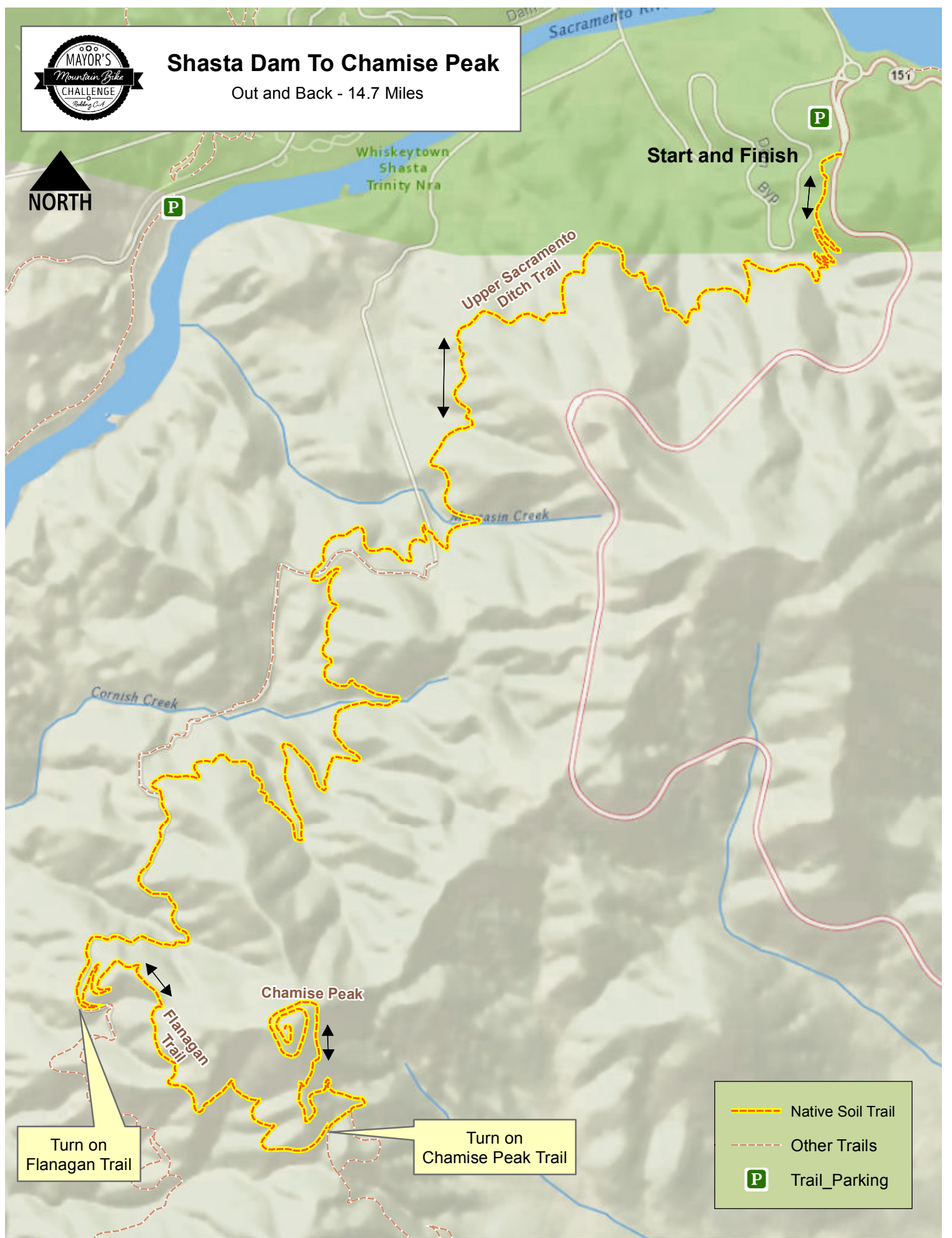




Shasta Dam To Chamise Peak

Out and Back - 14.7 Miles



Start and Finish

Upper Sacramento Ditch Trail

Cornish Creek

Whiskeytown Basin Creek

Chamise Peak

Flanagan Trail

Turn on Flanagan Trail

Turn on Chamise Peak Trail

- Native Soil Trail
- Other Trails
- Trail_Parking

Shasta Dam to Chamise Peak

Park on the south side of the Shasta Dam visitors parking lot

Head south on the road for 100 yards and the trail starts on your right.

PM 0.0 - Down Upper Sac Ditch trail

PM 5.1 - Turn left following signs up to Chamise Peak

PM 6.3 - Turn left up towards Chamise Peak

PM 6.4 - Keep left up towards Chamise Peak

PM 7.3 - You are on top of Chamise Peak ... enjoy the view... you will now be backtracking to the parking lot

PM 8.3 - Turn right headed down to Upper Sac Ditch Trail

PM 8.4 - Keep Right headed down to Upper Sac Ditch Trail

PM 9.6 - Stay straight onto Upper Sac Ditch headed to Shasta Dam

PM 14.7 -You are back at the trailhead at Shasta Dam. Well done!!